

# Method Validation of Simvastatin Tablets for Estimating Acetone, Ethanol, Isopropyl Alcohol, and Dichloromethane by Gas Chromatograph with Head Space

K. Shivakanth Reddy\*, Y. Keerthi Reddy, Sowmya Vennam

Scient Institute of pharmacy, Kanapuram, Ibrahimpatan, Telangana, India

\*Corresponding author: Shivakanth, R.K., Scient Institute of pharmacy, Kanapuram, Ibrahimpatan, Telangana, India,  
E-mail: [redyshivakanth370@gmail.com](mailto:redyshivakanth370@gmail.com)

## Abstract

A simple Gas Chromatography-Head Space(GC-HS) method for the determination of residual solvents in simvastatin tablets using Nitrogen as the carrier gas at 1.3 mL/min with DB-624 (30 m X 0.32 mm ID X 1.8  $\mu$ m) as column using Flame Ionisation Detector(FID) as detector was developed. The developed method was validated and parameters were to be found within the limits of international conference on harmonization (ICH) guidelines. The retention time for residual solvents individually and in spiked standard solution was determined. The % RSD for six injections should be NMT15%. The percentage recovery ranges from 80 - 120%. The correlation coefficient  $R^2 \geq 0.99$ . The limit of detection and limit of quantification was found to be specific. Precision, method precision and intermediate precision was found to be within the acceptance limit. Finally the sample was tested for the presence of residual solvents mainly Isopropyl alcohol was found.

Received Date: March 09, 2017

Accepted Date: April 04, 2017

Published Date: April 10, 2017

**Citation:** Shivakanth, R.K., et al. Method Validation of Simvastatin Tablets for Estimating Acetone, Ethanol, Isopropyl Alcohol, and Dichloromethane by Gas Chromatograph with Head Space. (2017) J Anal Bioanal Sep Tech 2(1): 1- 4.

DOI: 10.15436/2476-1869.17.1414

**Keywords:** Simvastatin, Gas chromatography, HMG Co-A, Residual solvents, DB- 624, ICH



## Introduction

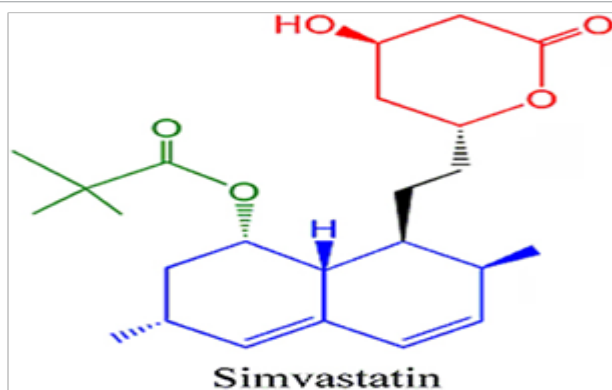
Statins, inhibitors of 3-hydroxy-3-methylglutaryl-coenzyme A (HMG-Co-A) reductase, have revolutionized the most efficient agents for reducing plasma cholesterol being also appreciated for their good tolerance. Angiographic studies have demonstrated that these compounds reduce the progression and may induce the regression of atherosclerosis. These effects were translated in significant cardiovascular morbidity and mortality reductions in many clinical trials (WOSCOPS, AFCAPS/TeX CAPS, HS, CARE, LIPID, HPS). The beneficial effects of the HMG-Co-A reductase inhibitors are usually attributed to their capacity to reduce the endogenous cholesterol synthesis, by competently inhibiting the principal enzyme involved. Since mevalonate, the product of HMG Co A reductase reaction, is the precursor not only for cholesterol, but also for many other non-steroidal isoprenoid compounds, inhibition of this key enzyme may result in pleiotropic effects. They have been divided into two categories, involving: directly lipids, or intracellular signaling pathways. The first category includes: inhibition of cholesterol biosynthesis, increased uptake and degradation

of low density lipoproteins (LDL), inhibition of the secretion of lipoproteins, inhibition of LDL oxidation, and inhibition of the scavenger receptors expression. Statins modulate a series of processes leading to reduction of the accumulation of esterified cholesterol into macrophages, increase of endothelial NO synthetase, reduction of the inflammatory process, increased stability of the inflammatory process, increased stability of the atherosclerotic plaques, restoration of platelets activity and of the coagulation process.

In addition, statins can inhibit tumor cells growth and enhance intracellular calcium mobilization. It was observed that inhibitors of HMG Co A reductase induce a reduction of the formation of osteoclast in rodents. Human subjects treated with statins have shown a reduction in the number of bone fractures.

The discovery of statins has led to an important progress in the primary and secondary prevention of coronary heart disease. Although angiographic modifications following statin therapy were modest. Clinical benefits that accompanied the therapy have been significant. Numerous clinical studies have correlated the reduction of blood cholesterol induced by these compounds with the reduction of the number of major coronary events, as well as general mortality in coronary patient.





## Method Details

### Instrument Parameter

Instrument Name: GC, Make: SHIMADZU, Model: GC2010 Plus

<b>Column</b>	DB-624- 30m X 0.32 mm X 1.8 µm or equivqlent
<b>Flow rate</b>	1.3 ml/min
<b>Split Ratio</b>	1:15
<b>Injection volume</b>	1.0 mL
<b>Carrier gas</b>	Nitrogen
<b>Injection temp</b>	220 <sup>o</sup> c
<b>Detector temp</b>	260 <sup>o</sup> c
<b>Makeup flow</b>	30 mL/min
<b>Hydrogen flow</b>	40 mL/min
<b>Air flow</b>	400 ml/min
<b>Runtime</b>	17.33 min

### Column Oven Temperature programme:

Rate( <sup>o</sup> /min)	Temp <sup>o</sup> c	Hold time(min)
-	40.0	03,00
8.0	80.0	02,00
30.0	240.0	02.00

### Head Space Parameters:

<b>GC Cycle Time</b>	<b>Off</b>
<b>Needle temp</b>	100 <sup>o</sup> c
<b>Transfer line temp</b>	110 <sup>o</sup> c
<b>Sample platen temp</b>	90 <sup>o</sup> c
<b>Sample equilibration time</b>	20 min
<b>Pressurize</b>	10 psi
<b>Pressurization time</b>	1 min
<b>Pressurization equilibration time</b>	0.2 min
<b>Loop fill time</b>	1 min
<b>Loop fill pressure</b>	5 psi
<b>Injection time</b>	1 min

### Preparation of standards and sample

**Diluent:** Milli Q Water.

**Preparation of Standard Solution:** Taken 50 mL volumetric flask containing Diluents and add 15.9 µL, of Acetone, 15.8 µL of Ethanol, 16,0 µL of Isopropyl alcohol, 1.1 µL of Dichloromethane and diluted up to the volume with Diluents, and mix well, transfer 2 mL of this solution into six Head Space vials and crimp tightly with septa.

**Preparation of sample solution:** Weigh accurately 100 mg of sample into a 20 mL Head Space vial and add 2 mL of diluents and crimp the vial tightly with septa (prepared in duplicate).

## Method Validation

The parameters like specificity, precision, linearity, accuracy, robustness, system suitability were performed that are mentioned in the international conference on harmonization (ICH) guidelines.

Specificity is performed to know the retention time for the residual solvents individually and in spiked sample solution.

Precision was validated to know the closeness of agreement between a series of measurements obtained from multiple sampling of the same homogenous sample. % RSD for the precision was also found to be NMT15%.

Linearity was done to know the test results which are directly proportional to the concentration of analyte in the sample. It was performed from LOQ to 100% and results were found to be within the limits.

Accuracy is the amount of the drug recovered from the spiked sample. It is assessed by 3 determinations over a minimum of 3 concentrations levels covering the specified range. Robustness is tested by introducing small variations in the method parameters. From the results it was observed that the method remain unaffected.

System suitability is performed to ensure that the complete testing system is suitable for intended application.

Finally the sample is checked for the presence of residual solvents especially Isopropyl alcohol.

## Results

All the validated parameters were found to be within the limits. Linearity is performed from 20 - 100% and graph obtained was linear showing correlation coefficient  $R^2 \geq 0.99\%$ . Drug recovery should be 80 - 120%. System suitability for six injections % RSD was found to be NMT 15%. Insert (Table 1, table 2, Figure 1, Table 3, Figure 3, Table 4, Figure 2, Table 5, Figure 4, Table 6, Table 7)

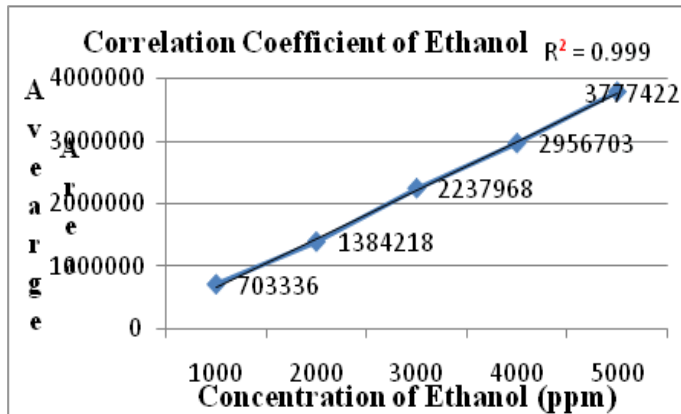
**Table 1:** Specificity.

Solvent Name	Retention time	
	individual	spiked
<b>Ethanol</b>	3.673	3.679
<b>Acetone</b>	4.145	4.147
<b>Isopropyl alcohol</b>	4.375	4.376
<b>Dichloromethane</b>	4.757	4.757

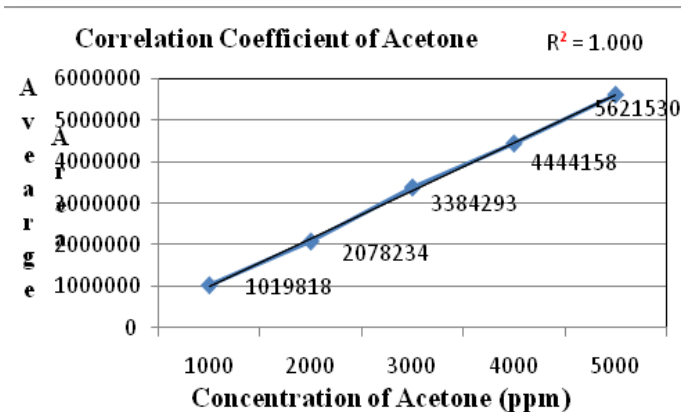
**Linearity**

**Table 2:** Linearity table for Ethanol.

Concentration(ppm)	Average area
1000	703336
2000	1384218
3000	2237968
4000	2956703
5000	3777422
<b>correlation coefficient</b>	0.999



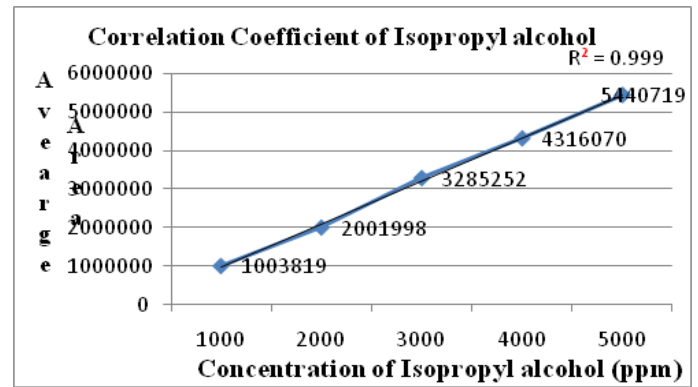
**Figure 1:** Linearity graph for Ethanol.



**Figure 2:** Linearity graph for Acetone.

**Table 3:** Linearity table for Acetone.

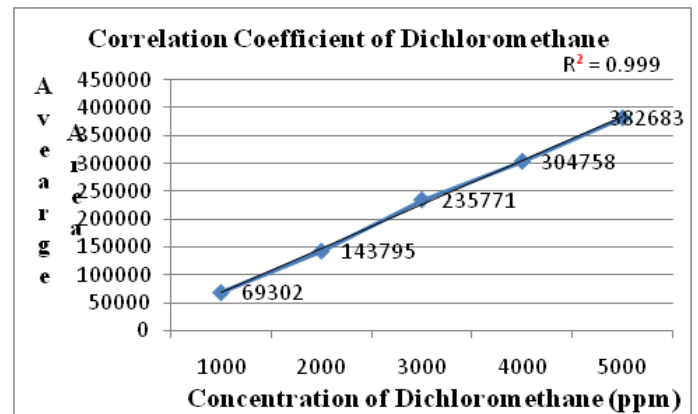
Concentration(ppm)	Average area
1000	1019818
2000	2078234
3000	3384293
4000	4444158
5000	5621530
<b>correlation coefficient</b>	1.000



**Figure 3:** Linearity graph for Isopropyl alcohol.

**Table 4:** Linearity table for Isopropyl alcohol.

Concentration(ppm)	Average area
1000	1003819
2000	2001998
3000	3285252
4000	4316070
5000	5440719
<b>correlation coefficient</b>	0.999



**Figure 4:** Linearity graph for Dichloromethane.

**Table 5:** Linearity table for Dichloromethane.

Concentration(ppm)	Average area
1000	69302
2000	143795
3000	235771
4000	304758
5000	382683
<b>correlation coefficient</b>	0.999

**Table 6:** Accuracy.

concentration in %	Average % Recovery			
	Ethanol	Acetone	IPA	MDC
LOQ	81.20	87.63	81.40	94.85
50%	82.29	89.18	82.98	93.59
100%	94.60	95.38	92.73	97.84
150%	86.66	87.65	84.93	97.27

**Table 7:** LOD and LOQ.

Solvent	Ethanol	Acetone	IPA	MDC
LOD	195	182	207	29
LOQ	591	551	628	88

### Robustness

The flow rate was changed  $\pm 0.2$  mL/min from that of the original one i.e. 1.3 mL/min, The Column oven temperature

### Following Formulae Calculation

Isopropyl alcohol Preparation-1	=	$\frac{39416}{6006741}$	X	$\frac{16}{50}$	X	$\frac{2}{100.41}$	X	0.781	X	1000000	=	33	ppm
Isopropyl alcohol Preparation-2	=	$\frac{36542}{6006741}$	X	$\frac{16}{50}$	X	$\frac{2}{100.94}$	X	0.781	X	1000000	=	30	ppm
<b>Average</b>											=	<b>31</b>	<b>ppm</b>

### Results of Sample Preparations

	Ethanol (Result in ppm)	Acetone (Result in ppm)	Isopropyl alcohol (Result in ppm)	Dichloromethane (Result in ppm)
Preparation-1	BDL	BDL	33	BDL
Preparation-2	BDL	BDL	30	BDL
Average	BDL	BDL	32	BDL

### Conclusion

From the results obtained we can conclude that all the acceptance criteria i.e. %RSD for at least of six injections is NMT 15% as per USP. From the batch analysis Isopropyl alcohol was found about 32ppm in the sample.

**Acknowledgement:** The author thanks to the Star tech labs Pvt. Ltd. for providing all the facilities to our work.

was changed  $\pm 4^{\circ}\text{C}$  from the original value i.e.  $40^{\circ}\text{C}$ , and The Temperature of detector was changed  $\pm 5^{\circ}\text{C}$  from the original value i.e.  $260^{\circ}\text{C}$ . The obtained results show that it has not affected by change in Flow rate, Column oven Temperature, and Detector Temperature.

### Batch Analysis

Finally the prepared simvastatin tablets were tested for the presence of residual solvents. Prepare the test solution in duplicate consecutively for the single batch injects the prepared two tests solutions into the gas chromatography and record the peak responses. Subtract the area counts at solvent retention time in blank injection from the area counts obtained due to test preparation. Calculate the content in ppm of residual solvents by using average area from test solution against to the solvent peak areas obtained from six standard injections

### References

- European medicines agency 2009. ICH topic Q3C (R4) impurities, Guidelines for residual solvents.  
[Others](#)
- Camarasu, C.C, Szuts, M.M., Varga, G.B. Residual solvents in pharmaceutical products by GC-MS and GC-MS-SPME. (1998) J pharma Biomed Anal 18(4-5): 623-638.  
[Crossref](#) | [Others](#)
- ICH guide lines